

# Modular side-adapter FDN for Simoloyer<sup>®</sup> systems

## Application

Opened side-port during processing e. g. for

- gas release during processing
- through-flow of gasses during processing
- ventilation of vessel (pressure balance)

## Features

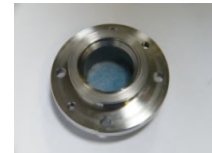
- modular design
- stainless-steel
- adaptation of different types filter
- easy to clean / easy to change filter



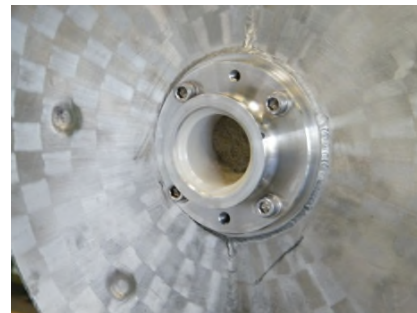
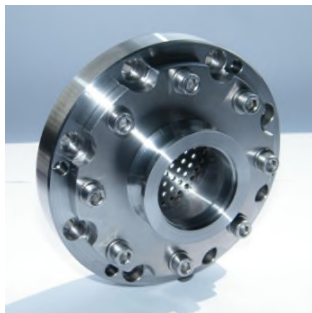
example side-adapter FDN-W08 (assembled)



assembly of side-adapter



(here with filter)



example of side-adapter FDN-W100, survey, hole-sheet, in use

## Dimensions / technical data

prepared for adaptation to grinding unit	W08, W20	W100	W400	W900
dimensions [L x B/W x H, mm]	Ø85x75	Ø125x57		
approx. net weight [kg]	0,5	0,5	0,7	1
max. pressure [bar]	4			
max. processing temperature [°C]	80			
thickness of filter (gap) [mm]	3			
front plate (inside vessel)	hole-sheet (stainless steel)			
free gateway [approx.. mm <sup>2</sup> ]	245	900		
assembly with	standard screws, set clamps ISO-KF			
flange size ISO KF	DN25	DN40	DN40/DN50	DN50
definition example	side-adapter FDN-Wxxx			

to be continued

technical data subject to alterations