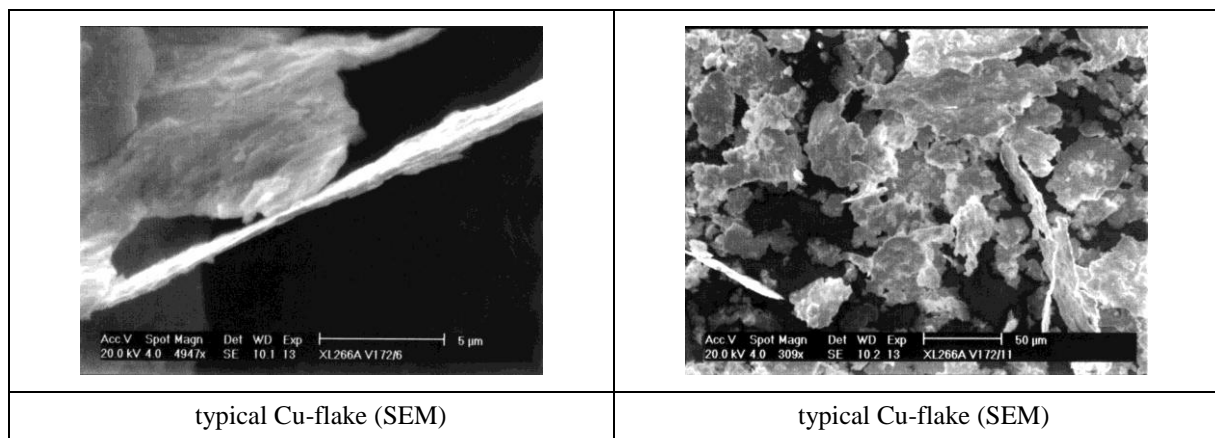


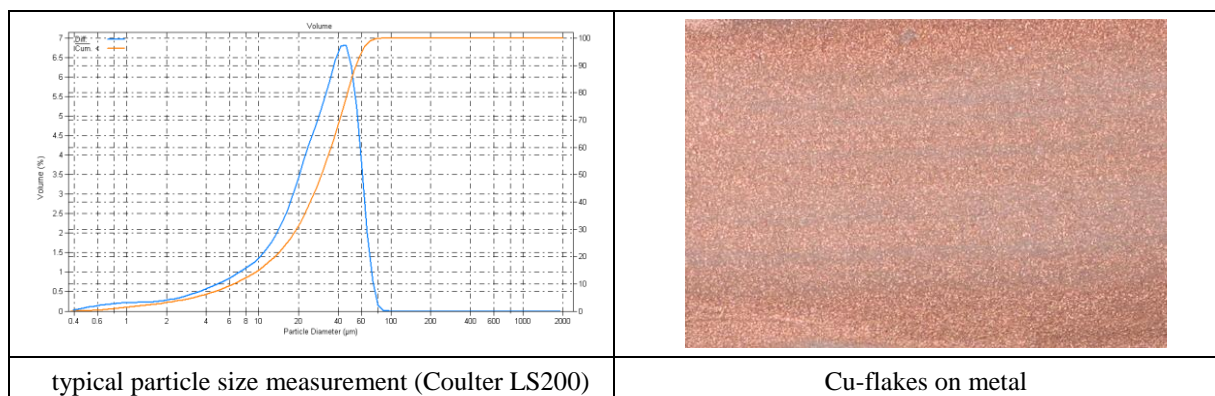
Copper-Flakes Cu*

processed by Simoloyer[®]-Technology

Applications	Advantages
<ul style="list-style-type: none"> • effect pigments • thermal / electrical conductivity • powder coatings • decoration / ornaments • ... 	<ul style="list-style-type: none"> • excellent aspect ratio • cost effective • low Fe content

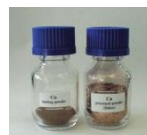


particle size analysis (example)					diameter / thickness	thickness	tap density	sieve analysis
d ₁₀ [µm]	d ₂₅ [µm]	d ₅₀ [µm]	d ₇₅ [µm]	d ₉₀ [µm]	ratio	[µm]	[kg/dm ³]	<45 µm min%
6,5	16,4	29,9	43,6	54,4	≤ 20	≤ 0,5 depends on application	(1,33)	100



Packaging:

gal	liter	lb	kg
2	6	22	10
15	50	220	100



technical data subject to alterations