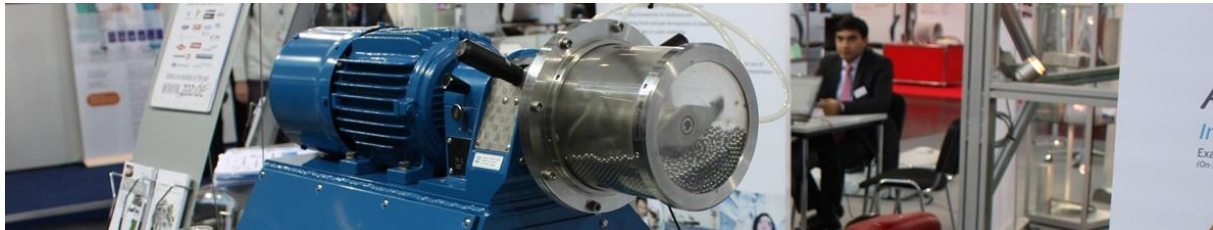


W01-2I-XT - glass vessel for Simoloyer® CM01 -

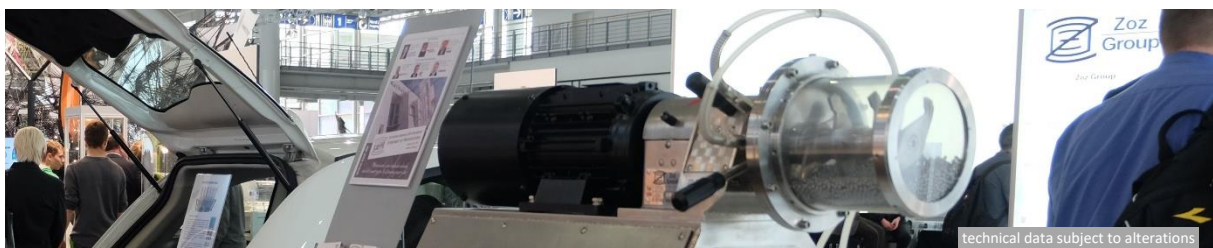
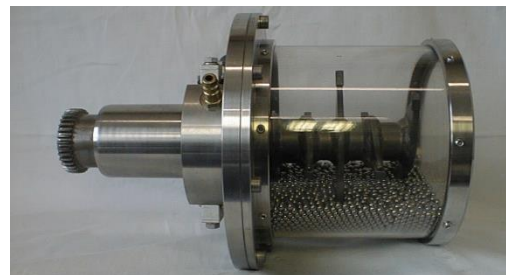
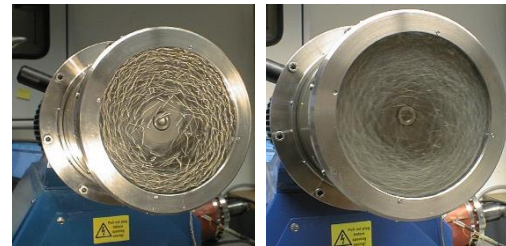


XT-vessel 01-2I

XT glass vessel visualizes kinetic & motion of grinding media during high kinetic processing with the correlation of rpm and load-ratio at shear and friction interaction (low kinetic) vs. collision (high kinetic). XT-2I fits to W01-2Im, -2Ih and -2Is1.

technical data, dimensions [35]

size/type	glass-vessel 01-2I
net weight	3 kg
nominal volume	2 liter
nominal power	1,35 kW/l
maximum relative velocity	10.9 m/sec
cooling system pre-seal-unit	not included, vessel only
cooling system flange	not included, vessel only
cooling system vessel	no
heating system vessel	no
heating system flange	no
atmosphere	no
airlock system main port	no
airlock system aux. port	no
continuous ports Z01-Z04	no
airlock system	no
operation pressure	0 - 0,2 bar
operation temperature	RT
operation mode	batch processing
material vessel	frames 1.4301, acrylic glass XT
material rotor	not included, vessel only
recommended grinding media	various, rubber, steel, ceramic
loading rates	HEM, MA, RM
grinding media $\leq \varnothing 5\text{mm}$	2-4 kg
product $< 4\text{mm}$	not recommended



technical data subject to alterations