

# Maltoz® - Simoloyer® Operating Program

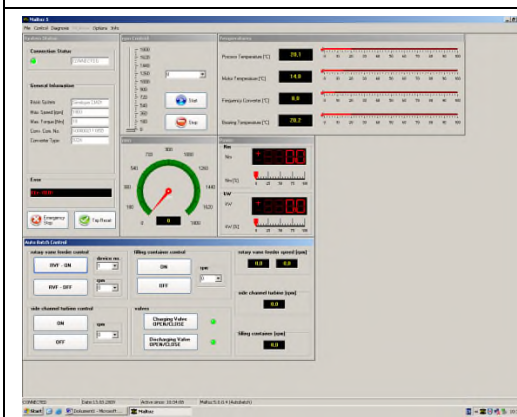
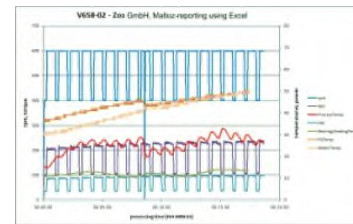
## Maltoz® \*. \* – Simoloyer Operating Program

### Features:

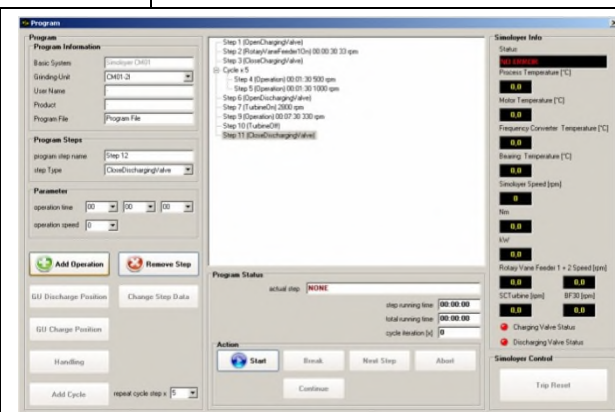
controllable process parameter (processing time, -rpm);  
file-management of process-programs (storage of process parameter);  
measurement of process temperature, -power, -torque;  
additional process (sensor) data (upon inquiry);  
cycle operation (programmable);  
data-files (history);  
manual mode;  
security measures

### Options:

full auto-batch unit control;  
additional measurement value logging

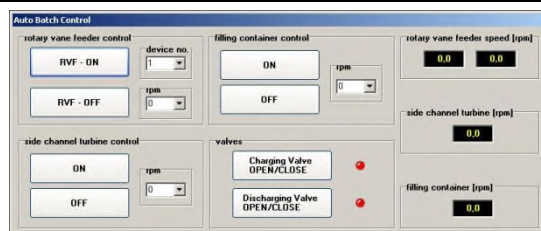


overview manual control screen

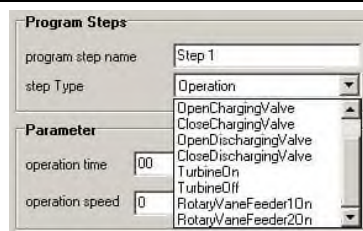


overview program control screen

## Maltoz® - in combination with Auto-Batch-Units AB\*:



Manual control of Auto-Batch-unit (rotary vane feeder, side channel turbine and valves)



Available program steps for automatic mode:

- open / close of charging and discharging valves
- side channel turbine control (on/off)
- rotary vane feeder control (time and rpm)

## Principle of Maltoz® - communication with the system:

Maltoz® is per-installed on Maltoz®-PC (Maltoz®-CD is part of the delivery volume);  
Maltoz®-PC is connected with frequency converter / industrial PC of the Simoloyer® system;  
IT-communication via ISA-CAT and Twin-CAT;  
log-file (processing history / data storage) on hard-disk of Maltoz®-PC (text-file, named \*.MA\*);  
log-file evaluable with calculation software (e. g. MS-Excel).