

Simoloyer® CM01

requirements for set-up & operation

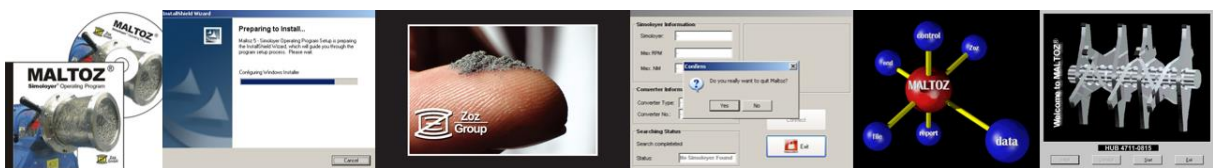


requirements	
power-supply	400V/7A, 3 phase, 50/60Hz
e. g. US/Japan, supply from	insulated transformer
main inverter drive, nom. power	2,7 kW, IP22 (pre-fuse 16A)
cooling/heating supply G $\frac{3}{4}$	up to 5 l/min, flextube ϕ 9mm
cooling water	5-25°C flow-in <4bar
material, operat. mode, load rate, high/deep temp, high pressure	select grinding unit
airlock system	DN40
gas-supply (atmosphere)	DN16, \leq 0.5 bar
operation vacuum/pressure	10 ⁻⁴ mbar up to 0,5bar
atmosphere	vacuum, var. gas, air
noise emission	95 dB(A)
ambient temperature	>0...<35°C, indoor
net weight base unit/total	75/150 kg
installation	table top, dislocation protected
L x B x H, space required	700x400x550mm, 1m ²

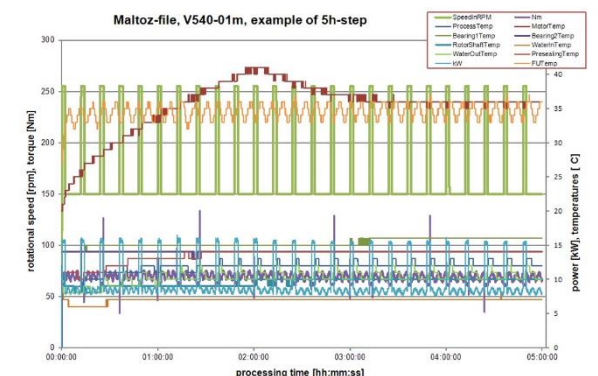
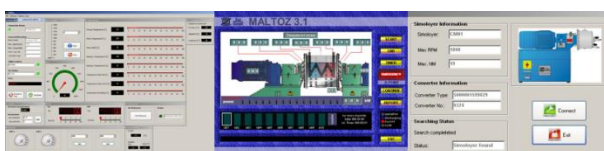


load ratio & speed, standard units only	
grinding media [kg]	max. rotary speed [rpm]
2	1.800
3	1.300
4	1.100
5	950

approx. values for standard grinding units nominal volume (stainless steel, rotor-heads Stellite®), GM 5mm steel balls, powder not included. For other select grinding unit.



- ### Maltoz® Simoloyer® Operating Program
- Pentium II, 150 MHz (220V)
 - 32 MB RAM
 - 100 MB free hard disc-space needed for Maltoz®
 - CD-ROM 6x speed
 - Windows 98, NT or higher version (English or German)
 - 15" monitor min.
 - net-work (RS232)



technical data subject to alterations