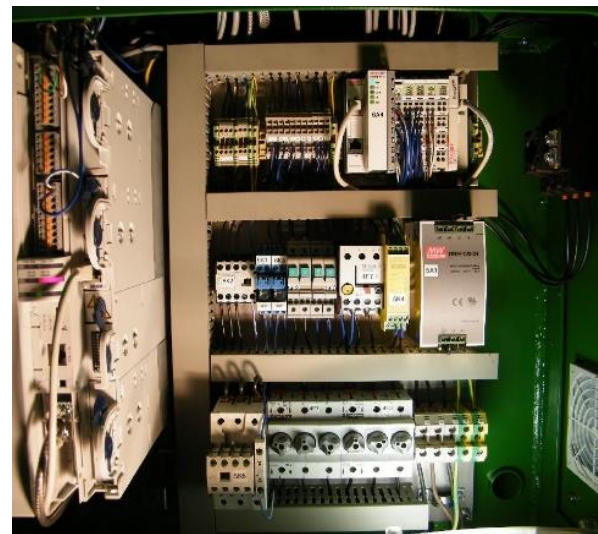


Simoloyer® CM08

requirements for set-up & operation

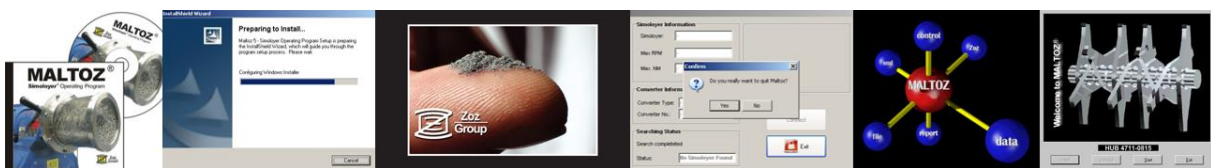


requirements	
power-supply	400V/25A, 3 phase, 50/60Hz
e. g. US/Japan, supply from	insulated transformer
main inverter drive, nom. power	11 kW, IP22 (pre-fuse 35A)
cooling/heating supply G½	up to 15 l/min, flextube ø13mm
cooling water	5-25°C flow-in <4bar
material, operat. mode, load rate, high/deep temp, high pressure	select grinding unit
airlock system	DN40/DN50
gas-supply (atmosphere)	DN16, ≤ 0.5 bar
operation vacuum/pressure	10 ⁻⁴ mbar up to 0,5bar
atmosphere	vacuum, var. gas, air
noise emission	92 dB(A)
ambient temperature	>0...<35°C, indoor
net weight base unit/total	500/600 kg
installation (on foundation)	heavy load plugs M12
L x B x H, space required	1.300x700x1.000mm, 10m ²

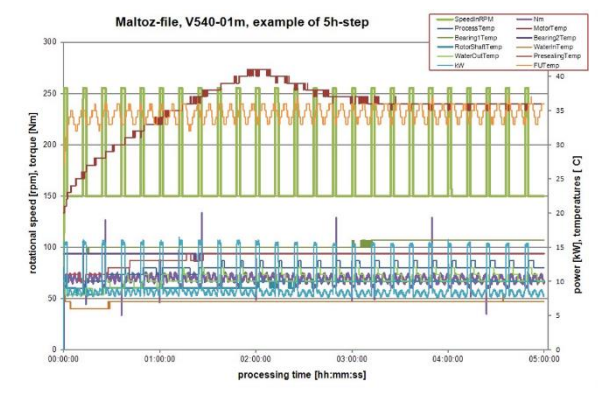


load ratio & speed, standard units only	
grinding media [kg]	max. rotary speed [rpm]
8	1000
10	800
12	650
15	500

approx. values for standard grinding units nominal volume (stainless steel, rotor-heads Stellite®), GM 5mm steel balls, powder not included. For other select grinding unit.



Maltoz® Simoloyer® Operating Program
• Pentium II, 150 MHz (220V)
• 32 MB RAM
• 100 MB free hard disc-space needed for Maltoz®
• CD-ROM 6x speed
• Windows 98, NT or higher version (English or German)
• 15" monitor min.
• net-work (RS232)



technical data subject to alterations