

Mechanically alloyed Stellite[®] bearing bush

Application

liquid Zn-/Al-systems in
 hot-dip galvanizing / aluminizing plants



pot-roll after machining



assembled bearing bush



bearing bush – composite system
 (consolidated PM-Stellite on 1.4404)

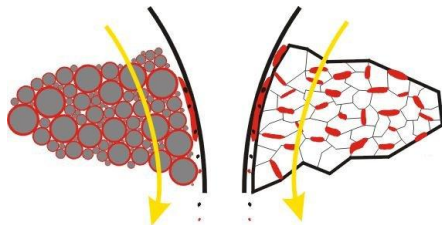
Advantages

- full dense material
- life time increase due to solid MA lubricant
- 2-phase design (PM on high alloyed stainless steel) →
- cost effective (lower Co amount)
- lower failure probability (collapse)

Principle

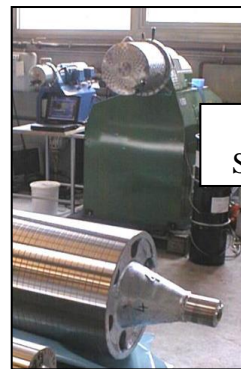
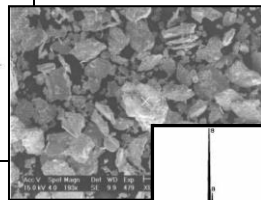
combination of properties

- Stellite[®]: corrosion resistance
 temperature resistance
 wear resistance
- second phase as solid lubricant



coating of hard-phase / nano-structured

solid lubricated Stellite[®]



MA of
 Stellite[®] + solid lubricant

removal of PCA

consolidation by HIP

machining & assembly



Dimensions

L x B/W x H	ø120/80 x 140 mm
weight	12kg
material	PM09MA-Z1

technical data subject to alterations